

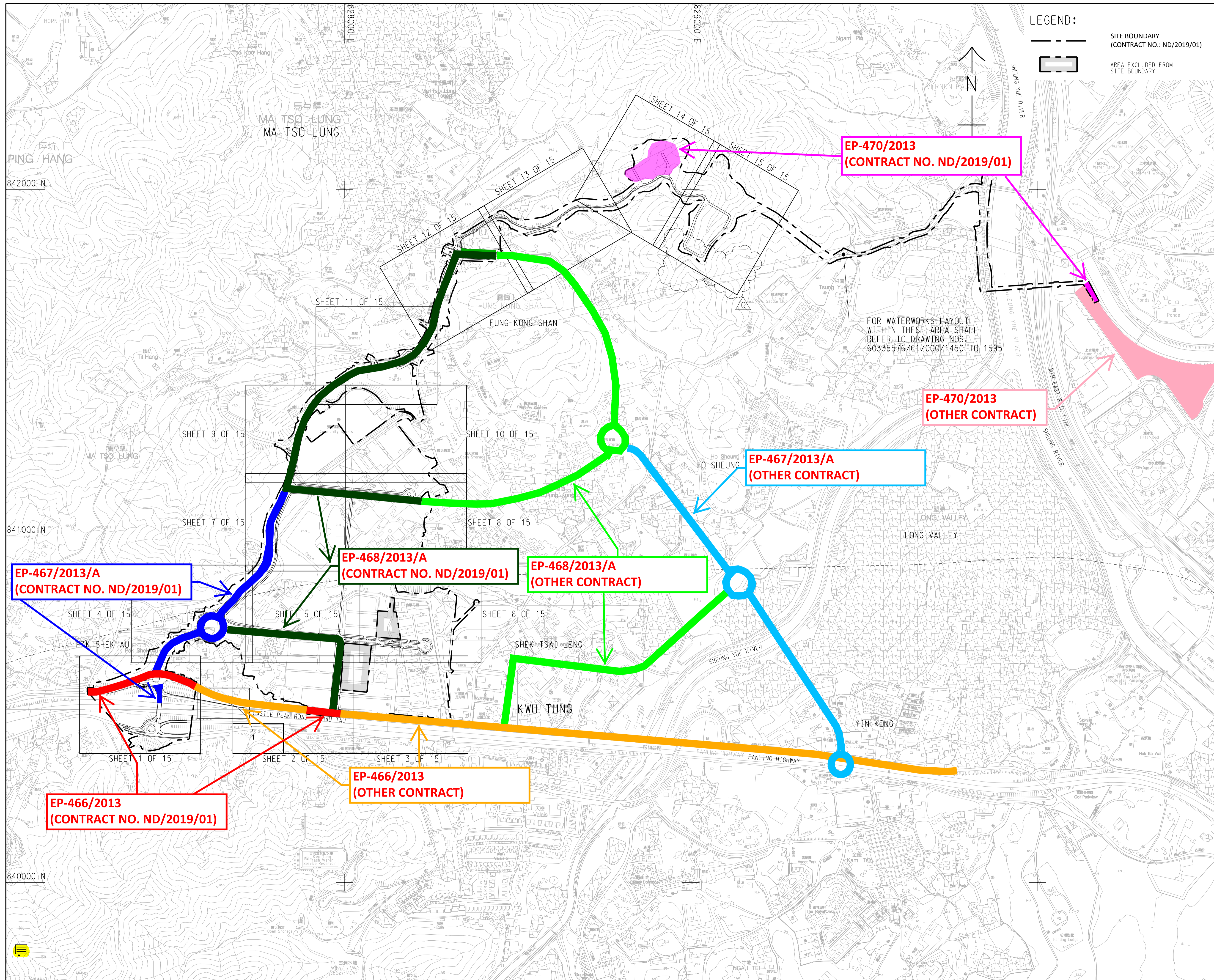
Summary of submission (EP-466/2013)

Submission of Location Plans

Cl. 2.5 of EP-466/2013 The Permit Holder shall, no later than 2 weeks before the commencement of construction of the Project, deposit four hard copies and one electronic copy of location plan(s) of the Project with a scale of 1:1000 or other appropriate scale as agreed with the Director. The plans shall include the details the works boundaries, works areas, vertical and horizontal alignments of the roads and any other major facilities; and the locations of key environmental mitigation measures.

Table of Summary for Submission

Requirement of Cl.2.5 of EP-466/2013	Dwg No. 60335576/C1/C00/1081-1 (For EP-470/2013, EP-468/2013/A, EP-467/2013/A and EP-466/2013)	Dwg No. BKREJV_SUR_XXX1 BKREJV_SUR_XXX2 (For EP-466/2013 only)	Dwg. No. 60335576/C1/C00/1101A 60335576/C1/C00/1102A (For EP-466/2013 only)	Dwg. No. 60335576/C1/C00/1122 60335576/C1/C00/1128 (For EP-466/2013 only)	Dwg No. 60335576/C1/C00/1221A 60335576/C1/C00/1001C (Original contract drawings. For legend reference only)	Dwg No. 60335576/C1/C00/1221A 60335576/C1/C00/1222A 60335576/C1/C00/1002 60335576/C1/C00/1003A (For EP-466/2013 only)
(i) Scale of 1:1000 or other appropriate scale as agreed with the Director	Scale: A1 1:5000 This drawing contains the works of different EPs (i.e. EP-470/2013, EP-468/2013/A, EP-467/2013/A and EP-466/2013) in relation to Contract No.: ND/2019/01 (This drawing is for indication purpose)	Scale: A3 1:1000	Scale: A3 1:1000	Scale: A1 Hor. 1:1000 Ver. 1:250	Since the purpose of these drawings is for legend reference only, the scale is not of concern. (Dwg. No. 60335576/C1/C00/1221A for Dwg. No. 60335576/C1/C00/1222A	Scale: A3 1:1000
(ii) The details the works boundaries, works areas, vertical and horizontal alignments of the roads and any other major facilities	-	The site boundary of Contract No.: ND/2019/01 is indicated.	The site boundary of Contract No.: ND/2019/01 is indicated. Horizontal alignment of the road is indicated.	Vertical alignment of the road is indicated.	(Dwg. No. 60335576/C1/C00/1001C for Dwg. No. 60335576/C1/C00/1002 60335576/C1/C00/1003A	
(iii) The locations of key environmental mitigation measure	-	Location of key environmental mitigation measure (i.e. 2.4m high solid dull green site barrier fences) is indicated.				Location of key environmental mitigation measure: (a) Low Noise Surfacing: 60335576/C1/C00/1221A 60335576/C1/C00/1222A (b) Temporary Noise Barrier: 60335576/C1/C00/1002 60335576/C1/C00/1003A



BKREJV

TITLE OF DRAWING
ENVIRONMENTAL PERMITS IN RELATION TO CONTRACT NO.: ND/2019/01

CONTRACT TITLE:
CONTRACT NO.: ND/2019/01
KWU TUNG NORTH NEW DEVELOPMENT AREA, PHASE 1: SITE FORMATION AND INFRASTRUCTURE WORKS

CLIENT
 業主
CEDD 土木工程拓展署
 Civil Engineering and Development Department

CONSULTANT
 工程顧問公司
AECOM Asia Company Ltd.
 www.aecom.com

SUB-CONSULTANTS
 分判工程顧問公司

ISSUE/REVISION
 修訂

STATUS
 階段

SCALE **DIMENSION UNIT**
 比例 尺寸單位
 A1 1 : 5000 METRES

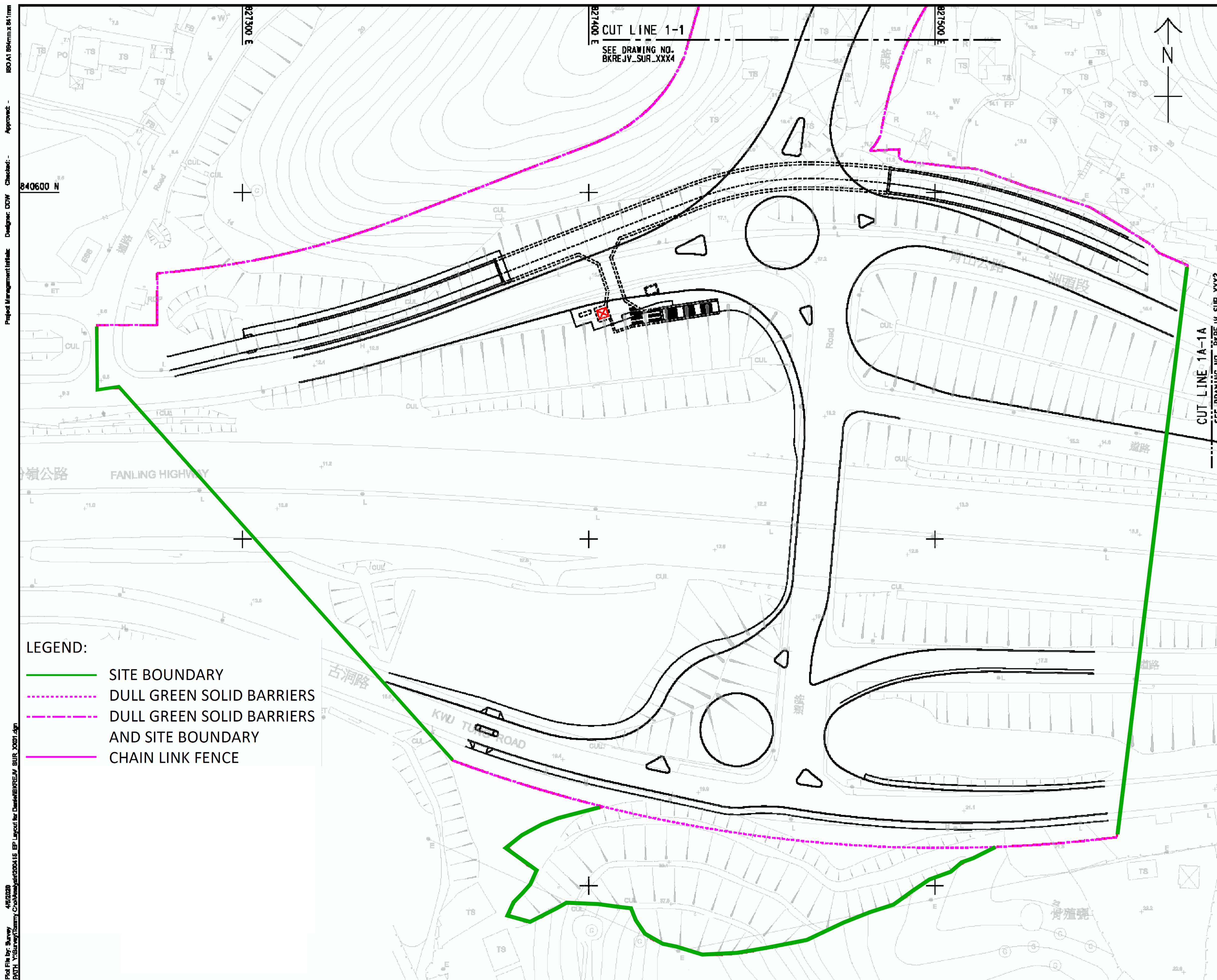
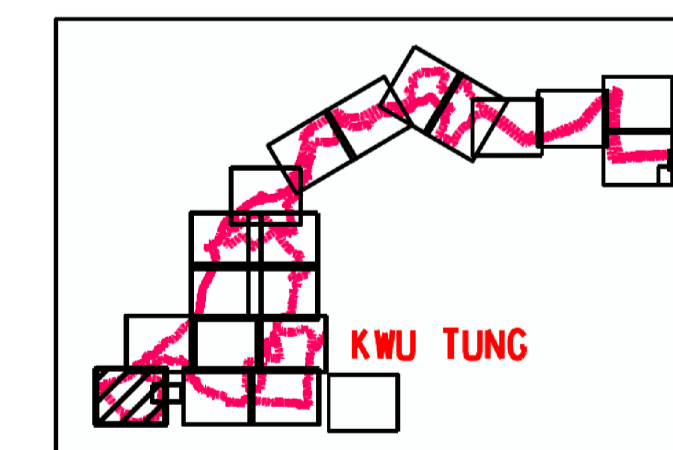
KEY PLAN
 索引圖

PROJECT NO. **CONTRACT NO.**
 項目編號 合約編號
 60335576 ND/2019/01

SHEET TITLE
 圖紙名稱
PLAN FOR ENVIRONMENTAL PERMITS

SHEET NUMBER
 圖紙編號
 60335576/C1/C00/1081-1

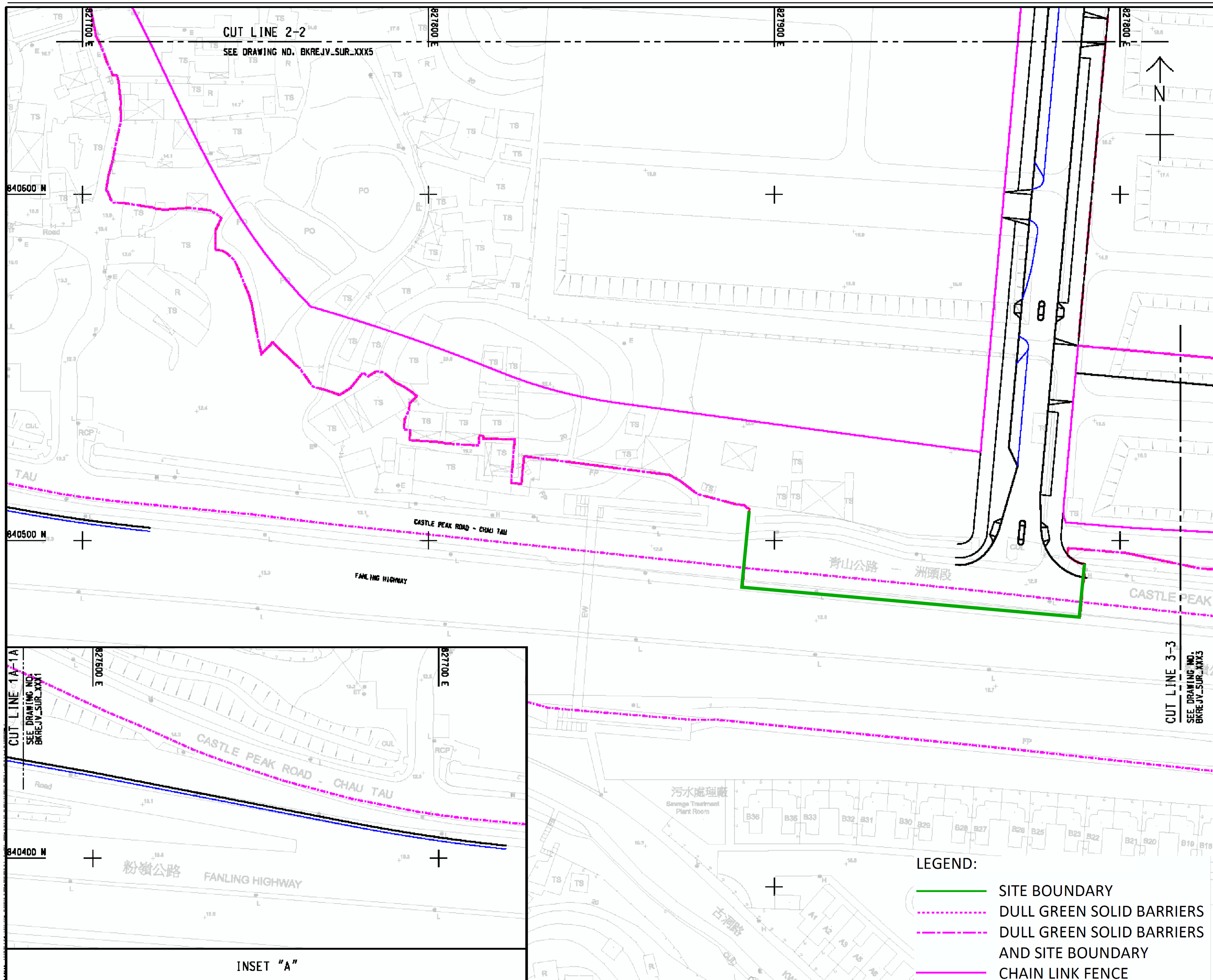
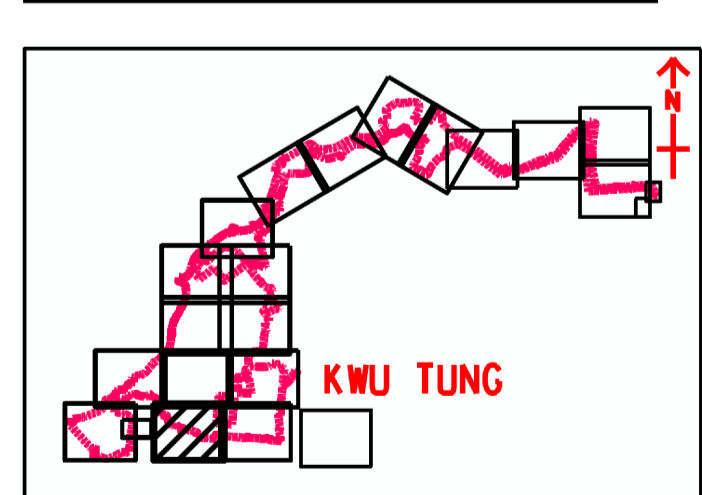
This drawing has been prepared for the use of AECOM's client. It may not be used, modified, reproduced or relied upon by third parties, except as agreed by AECOM, or as required by law. AECOM accepts no responsibility, and denies any liability whatsoever, to any party that uses or relies on this drawing without AECOM's express written consent. Do not scale this document. All measurements must be obtained from the stated dimensions.

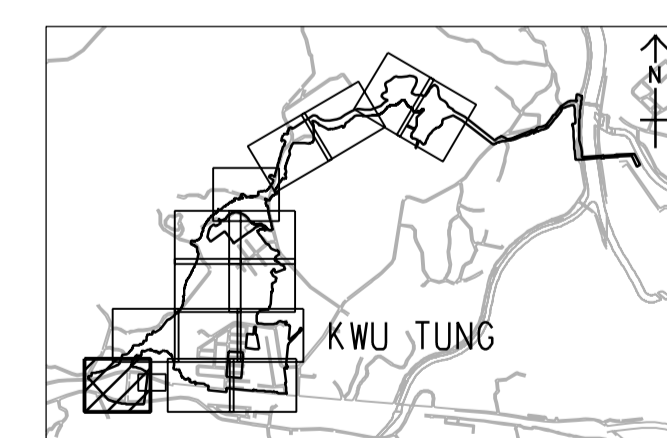


LEGEND:

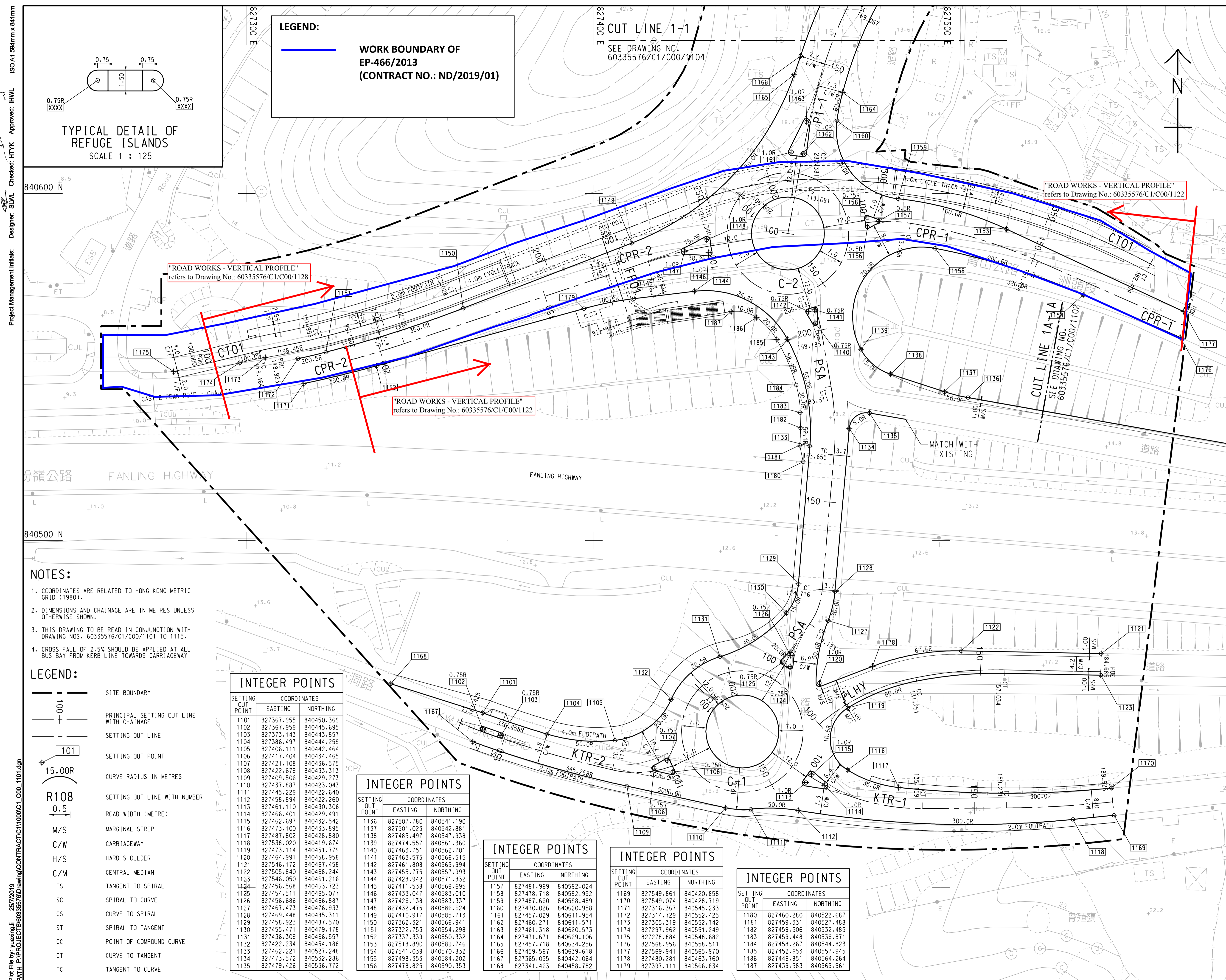
- SITE BOUNDARY
- - - - DULL GREEN SOLID BARRIERS
- - - - DULL GREEN SOLID BARRIERS AND SITE BOUNDARY
- CHAIN LINK FENCE

Project Management Institute: Designer: DCW Checked: -
 Approval: -
 RD A1 864mm x 84mm
 Plot File for Survey: 4/8/2019
 Path: Y:\Survey\2019\CastlePeak\BKREJV_SUR_XXX1.dwg



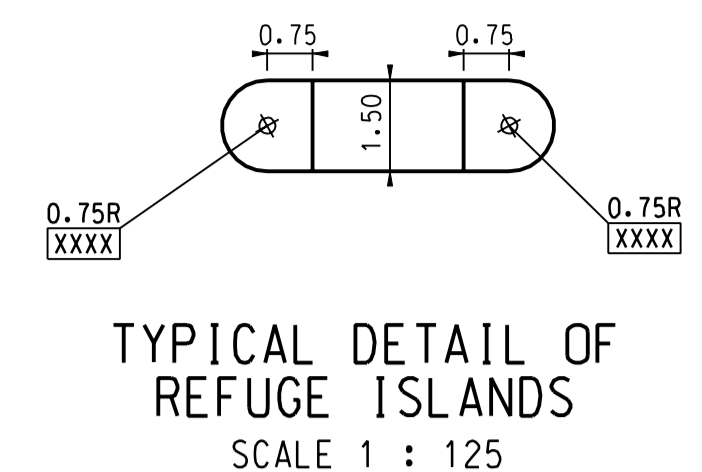


This drawing has been prepared for the use of AECOM's client. It may not be used, modified, reproduced or relied upon by third parties, except as agreed by AECOM or as required by law. AECOM accepts no responsibility, and denies any liability whatsoever, to any party that uses or relies on this drawing without AECOM's express written consent. Do not scale this document. All measurements must be obtained from the stated dimensions.



LEGEND:

—— **WORK BOUNDARY OF EP-466/2013 (CONTRACT NO.: ND/2019/01)**



"ROAD WORKS - VERTICAL PROFILE" refers to Drawing No.: 60335576/C1/C00/1128

"ROAD WORKS - VERTICAL PROFILE" refers to Drawing No.: 60335576/C1/C00/1122

"ROAD WORKS - VERTICAL PROFILE" refers to Drawing No.: 60335576/C1/C00/1122

- NOTES:**
- COORDINATES ARE RELATED TO HONG KONG METRIC GRID (1980).
 - DIMENSIONS AND CHAINAGE ARE IN METRES UNLESS OTHERWISE SHOWN.
 - THIS DRAWING TO BE READ IN CONJUNCTION WITH DRAWING NOS.: 60335576/C1/C00/1101 TO 1115.
 - CROSS FALL OF 2.5% SHOULD BE APPLIED AT ALL BUS BAY FROM KERB LINE TOWARDS CARRIAGEWAY

- LEGEND:**
- 100 SITE BOUNDARY
 - PRINCIPAL SETTING OUT LINE WITH CHAINAGE
 - SETTING OUT LINE
 - 101 SETTING OUT POINT
 - 15.00R CURVE RADIUS IN METRES
 - R108 SETTING OUT LINE WITH NUMBER
 - 0.5 ROAD WIDTH (METRE)
 - M/S MARGINAL STRIP
 - C/W CARRIAGEWAY
 - H/S HARD SHOULDER
 - C/M CENTRAL MEDIAN
 - TS TANGENT TO SPIRAL
 - SC SPIRAL TO CURVE
 - CS CURVE TO SPIRAL
 - ST SPIRAL TO TANGENT
 - CC POINT OF COMPOUND CURVE
 - CT CURVE TO TANGENT
 - TC TANGENT TO CURVE

INTEGER POINTS

SETTING OUT POINT	COORDINATES	
	EASTING	NORTHING
1101	827367.955	840450.369
1102	827367.959	840445.695
1103	827373.143	840443.857
1104	827386.497	840444.259
1105	827406.111	840442.464
1106	827417.404	840434.465
1107	827421.108	840436.575
1108	827422.679	840433.313
1109	827409.506	840429.273
1110	827437.887	840423.045
1111	827445.229	840422.640
1112	827458.994	840422.260
1113	827461.110	840430.306
1114	827466.401	840429.491
1115	827462.697	840432.542
1116	827473.100	840433.895
1117	827487.802	840428.880
1118	827538.020	840419.674
1119	827473.114	840451.779
1120	827464.991	840458.958
1121	827546.172	840467.458
1122	827505.840	840468.244
1123	827546.050	840461.216
1124	827456.568	840463.723
1125	827454.511	840465.077
1126	827456.686	840466.887
1127	827467.473	840476.933
1128	827469.448	840485.314
1129	827458.923	840487.570
1130	827455.471	840479.178
1131	827436.309	840466.557
1132	827422.234	840454.188
1133	827462.221	840527.248
1134	827473.572	840532.286
1135	827479.426	840536.772

INTEGER POINTS

SETTING OUT POINT	COORDINATES	
	EASTING	NORTHING
1136	827507.780	840541.190
1137	827501.023	840542.881
1138	827485.497	840547.938
1139	827474.557	840561.360
1140	827463.751	840562.701
1141	827463.575	840566.515
1142	827461.808	840565.994
1143	827455.775	840557.993
1144	827428.942	840571.832
1145	827411.538	840569.695
1146	827433.047	840583.010
1147	827426.138	840583.337
1148	827432.475	840586.624
1149	827410.911	840585.713
1150	827362.321	840566.941
1151	827322.753	840554.298
1152	827337.339	840550.332
1153	827518.890	840589.746
1154	827541.039	840570.832
1155	827498.353	840584.202
1156	827478.825	840590.353

INTEGER POINTS

SETTING OUT POINT	COORDINATES	
	EASTING	NORTHING
1157	827481.969	840592.024
1158	827478.718	840592.952
1159	827487.660	840598.489
1160	827470.026	840620.958
1161	827457.029	840611.954
1162	827460.271	840611.571
1163	827461.318	840620.573
1164	827471.671	840629.106
1165	827457.718	840634.256
1166	827459.567	840639.618
1167	827365.055	840442.064
1168	827341.463	840458.782

INTEGER POINTS

SETTING OUT POINT	COORDINATES	
	EASTING	NORTHING
1169	827549.861	840420.858
1170	827549.074	840428.719
1171	827316.367	840545.233
1172	827314.729	840552.425
1173	827305.319	840552.742
1174	827297.962	840551.249
1175	827278.884	840548.682
1176	827568.956	840558.511
1177	827569.941	840565.970
1178	827480.281	840463.760
1179	827397.111	840566.834

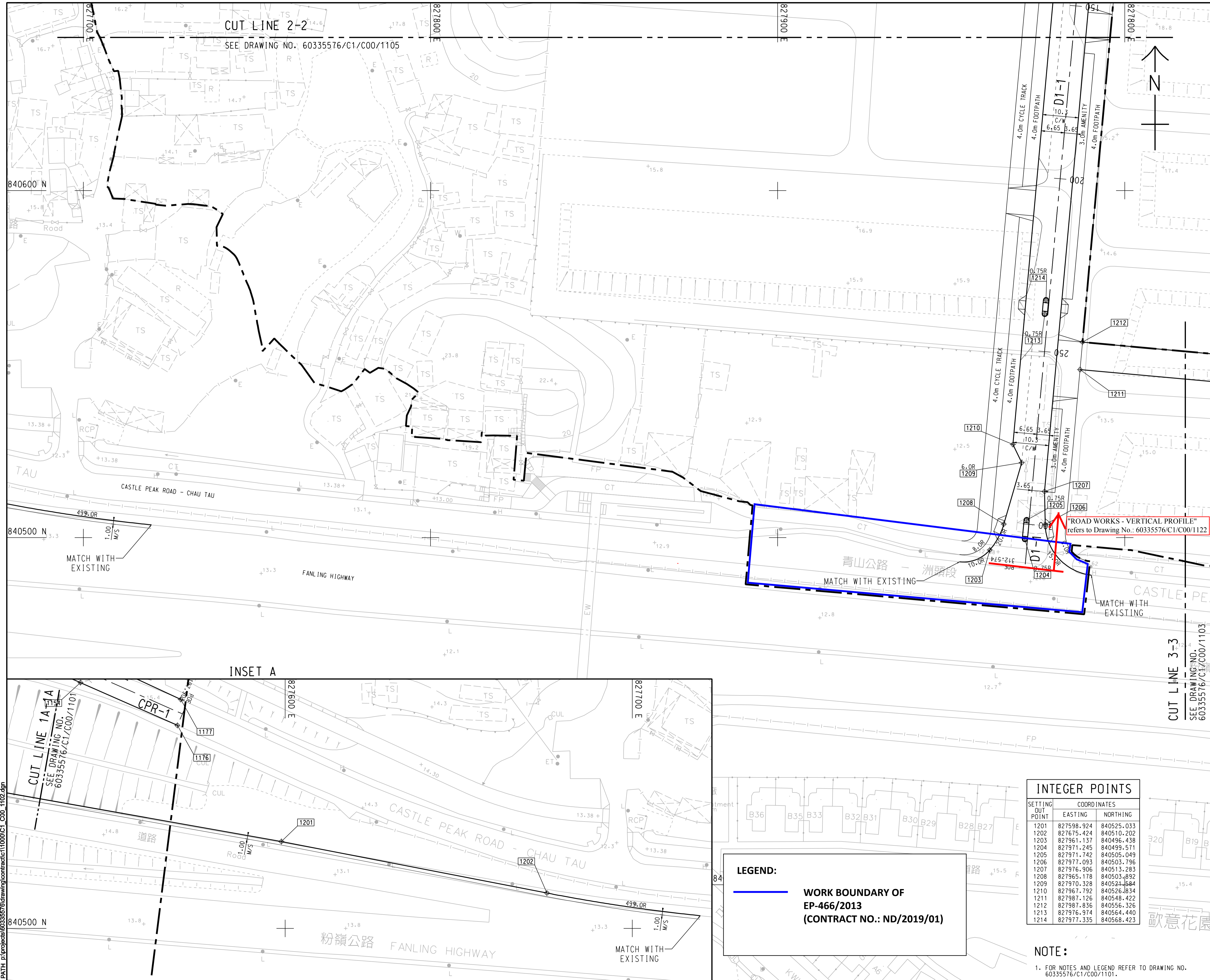
INTEGER POINTS

SETTING OUT POINT	COORDINATES	
	EASTING	NORTHING
1180	827460.280	840522.687
1181	827459.331	840527.488
1182	827459.506	840532.485
1183	827459.448	840536.871
1184	827458.267	840544.823
1185	827452.653	840557.945
1186	827446.851	840564.264
1187	827439.583	840565.961

Project Management Initials: Designer: SLWL Checked: HTYK Approved: IHWL
ISO A1 594mm x 841mm
Plot File by: yuxing.ji 25/7/2019
PATH: P:\PROJECTS\60335576\Drawing\CONTRACT\C1\C00_1101.dgn

ISO A1 594mm x 841mm
 Project Management Initials: Designer: BKKK Checked: HMKK Approved: HWL

Plot File by: yuexing.ji 26/7/2019
 PATH: E:\Projects\60335576\Drawing\contract\11000\C1_C00_1102.dgn



CUT LINE 2-2
 SEE DRAWING NO. 60335576/C1/C00/1105



INTEGER POINTS

SETTING OUT POINT	COORDINATES	
	EASTING	NORTHING
1201	827598.924	840525.033
1202	827675.424	840510.202
1203	827961.137	840496.438
1204	827971.245	840499.571
1205	827971.742	840505.049
1206	827977.093	840503.796
1207	827976.906	840513.283
1208	827965.178	840503.892
1209	827970.328	840521.584
1210	827967.792	840526.834
1211	827987.126	840548.422
1212	827987.836	840556.326
1213	827976.974	840564.440
1214	827977.335	840568.423

LEGEND:
 WORK BOUNDARY OF EP-466/2013 (CONTRACT NO.: ND/2019/01)

NOTE:
 1. FOR NOTES AND LEGEND REFER TO DRAWING NO. 60335576/C1/C00/1101.

BKREJV

TITLE OF DESIGNATED PROJECT:
 Castle Peak Road Diversion

CONTRACT TITLE:
 CONTRACT NO.: ND/2019/01
 KWU TUNG NORTH NEW DEVELOPMENT AREA, PHASE 1: SITE FORMATION AND INFRASTRUCTURE WORKS

CLIENT
 土木工程拓展署
 Civil Engineering and Development Department

CONSULTANT
 土研顧問公司
 AECOM Asia Company Ltd.
 www.aecom.com

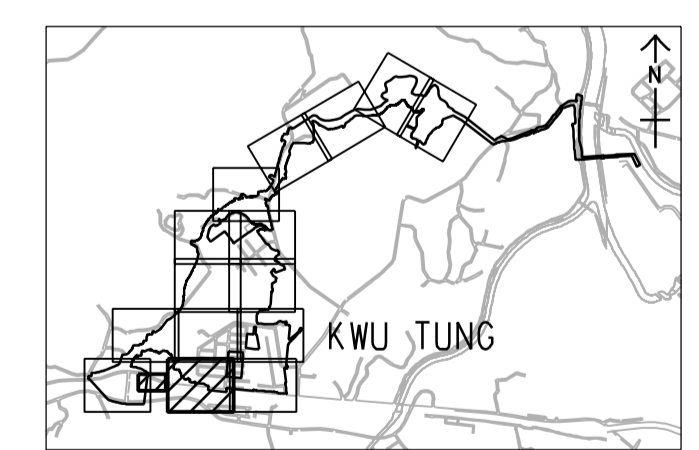
SUB-CONSULTANTS
 分判工程師有限公司

ISSUE/REVISION
 修訂

STATUS
 備案

SCALE **DIMENSION UNIT**
 比例 尺寸單位
A3 1:1000 METRES

KEY PLAN A1 1:40000
 索引圖

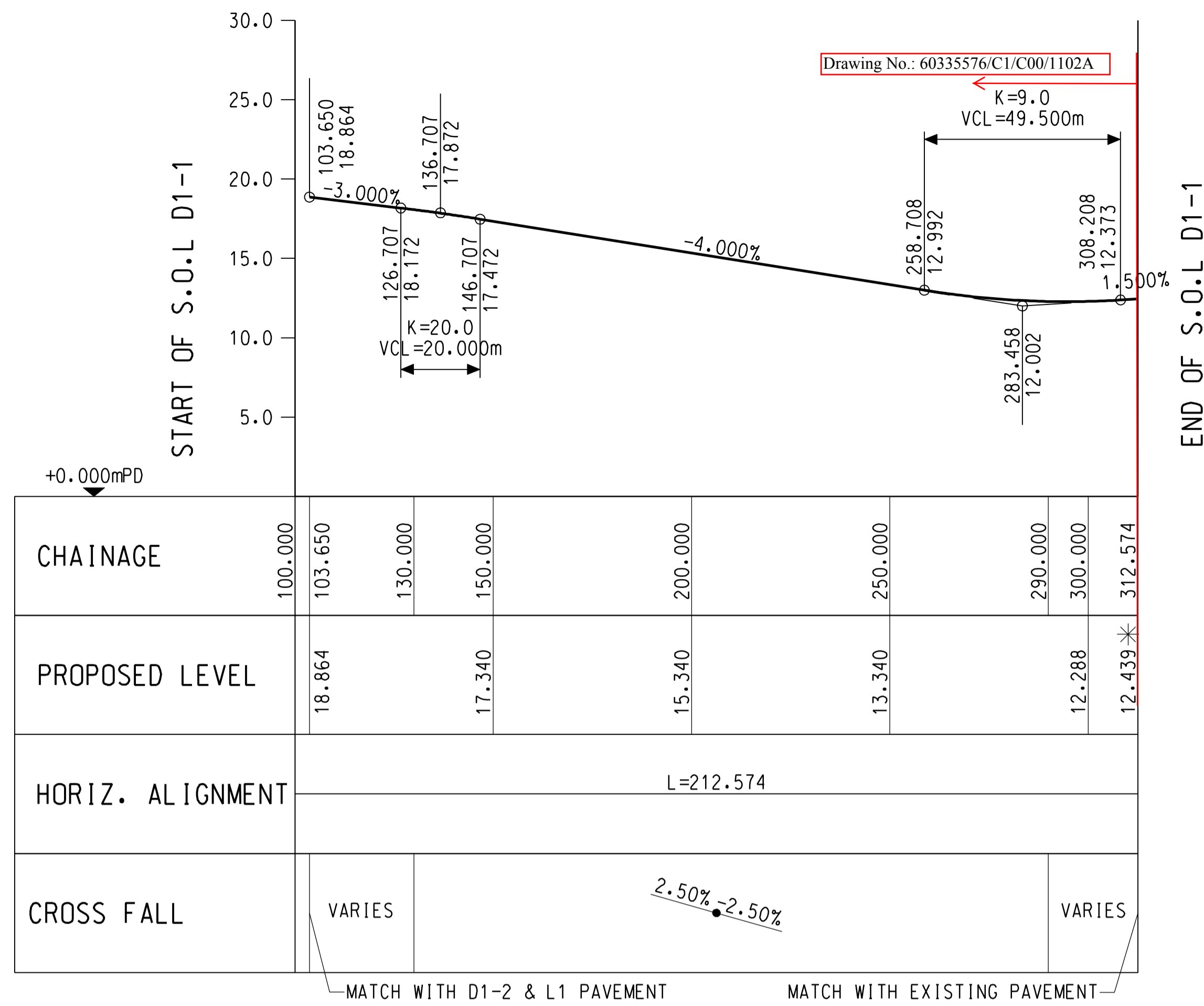


PROJECT NO. **CONTRACT NO.**
 項目編號 合約編號
 60335576 ND/2019/01

SHEET TITLE
 圖紙名稱
ROAD SETTING OUT PLAN

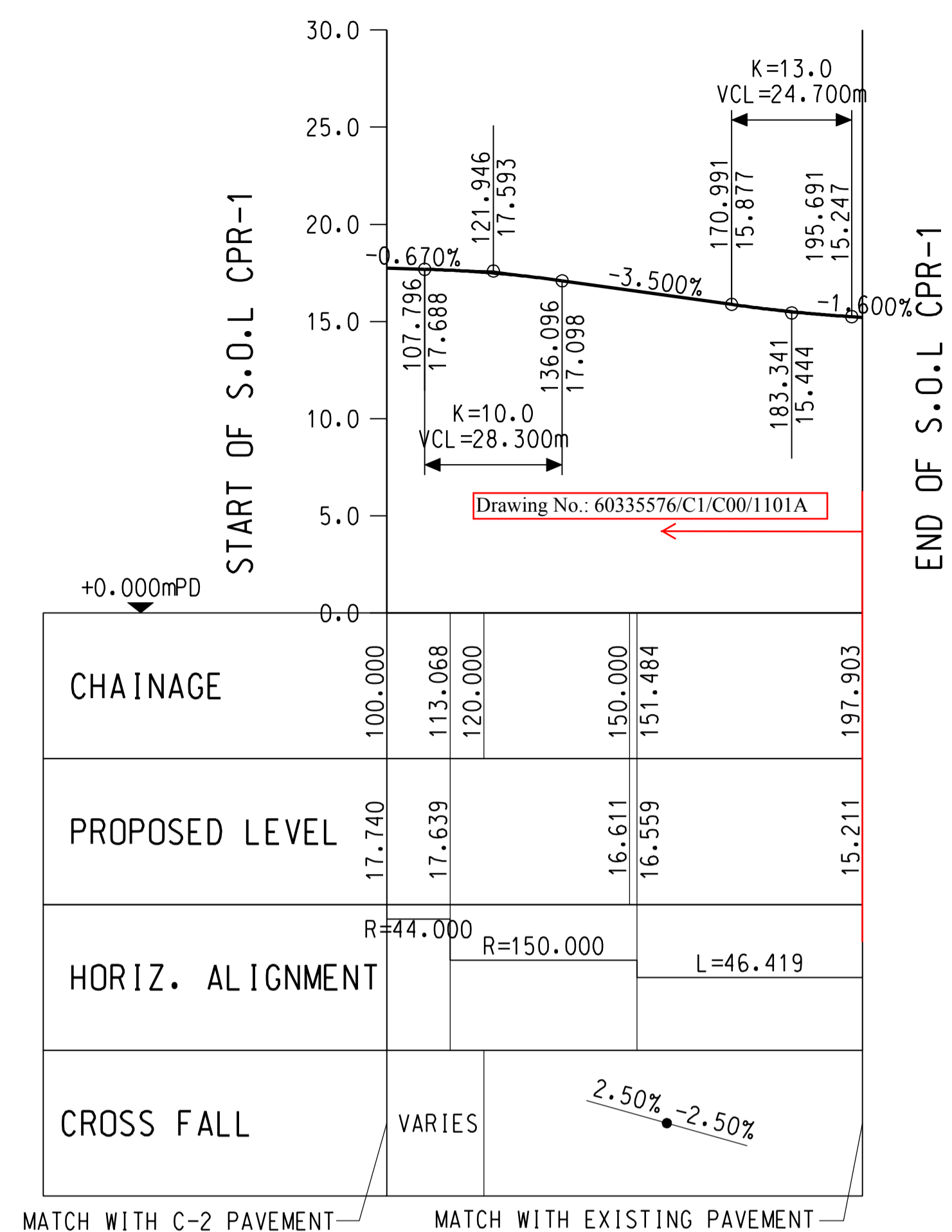
SHEET NUMBER
 圖紙編號
 60335576/C1/C00/1102A

This drawing has been prepared for the use of AECOM's client. It may not be used, modified, reproduced or relied upon by third parties, except as agreed by AECOM or as required by law. AECOM accepts no responsibility, and denies any liability whatsoever, to any party that uses or relies on this drawing without AECOM's express written consent. Do not scale this document. All measurements must be obtained from the stated dimensions.



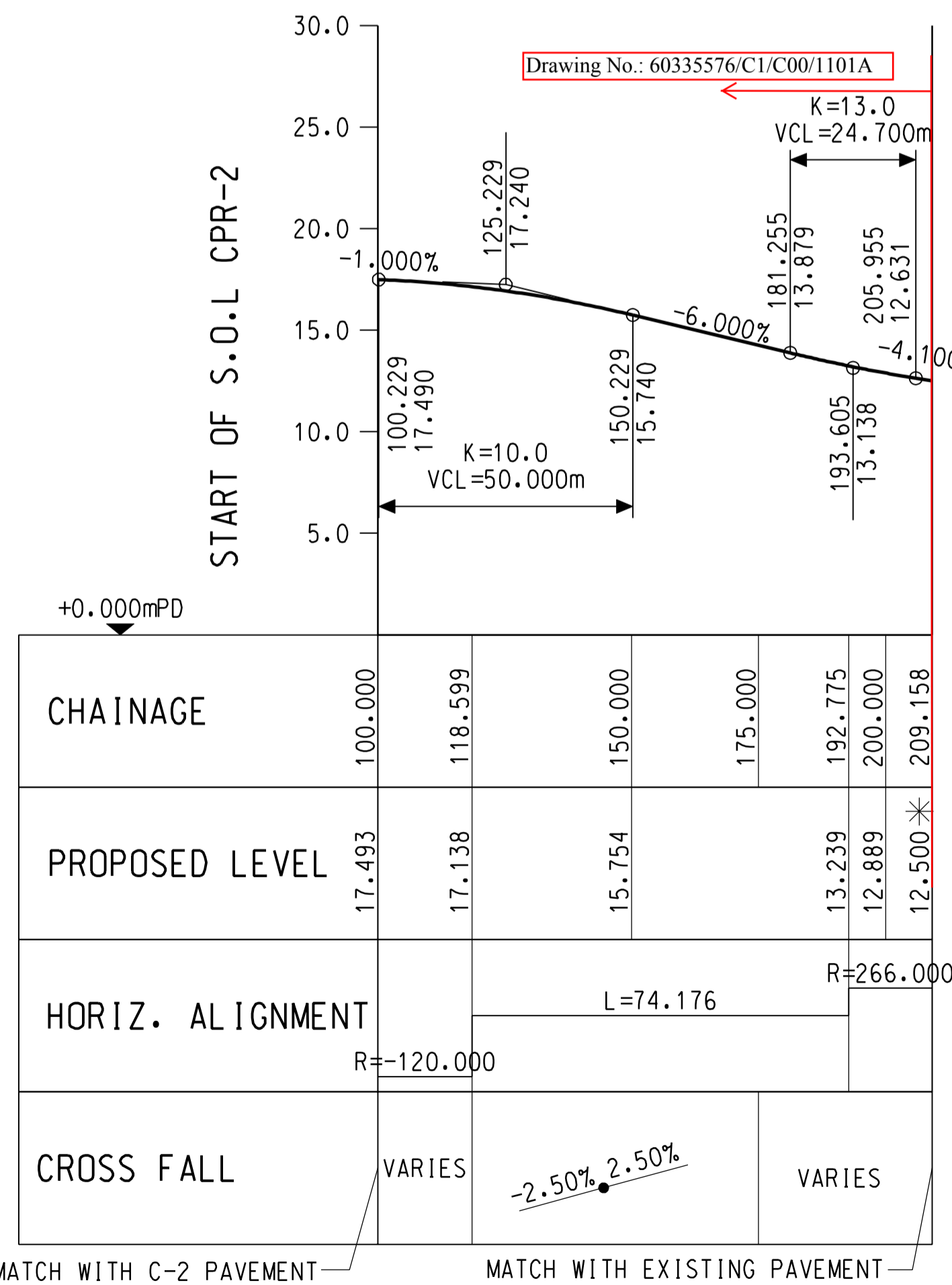
PROFILE ALONG THE SETTING OUT LINE D1-1

A1 SCALE HOR. 1:1000
 VER. 1:250



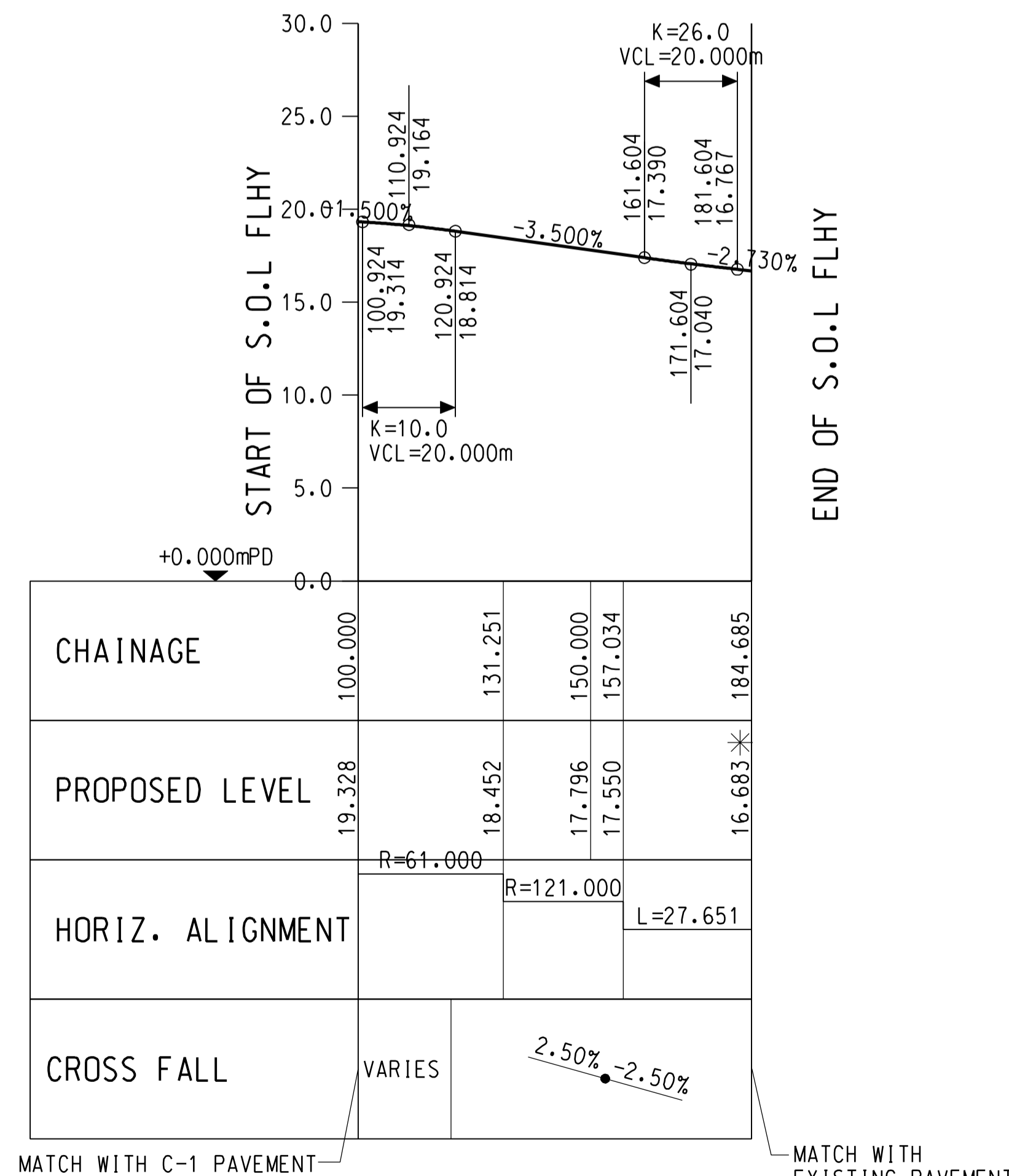
PROFILE ALONG THE SETTING OUT LINE CPR-1

A1 SCALE HOR. 1:1000
 VER. 1:250



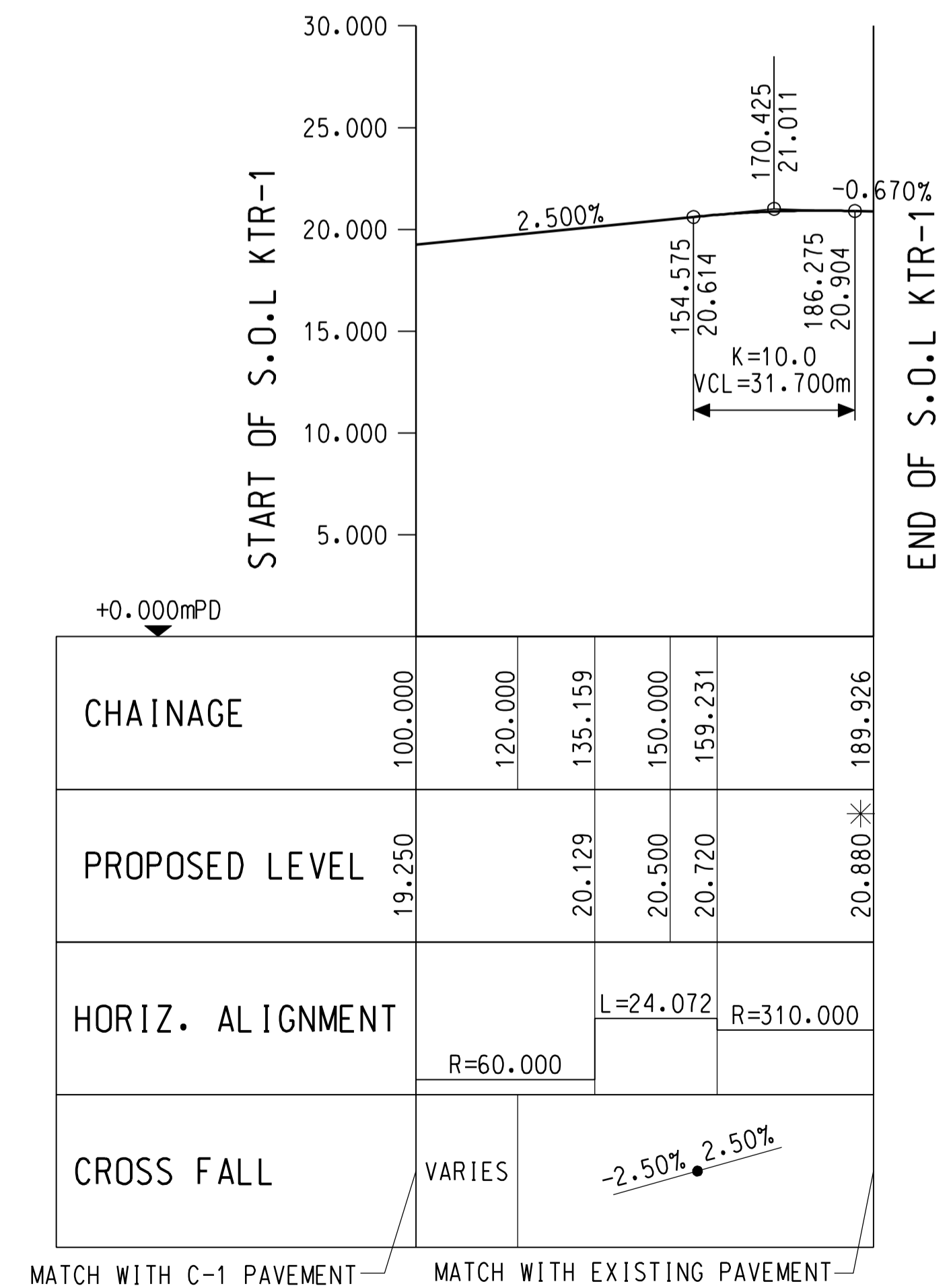
PROFILE ALONG THE SETTING OUT LINE CPR-2

A1 SCALE HOR. 1:1000
 VER. 1:250



PROFILE ALONG THE SETTING OUT LINE FLHY

A1 SCALE HOR. 1:1000
 VER. 1:250



PROFILE ALONG THE SETTING OUT LINE KTR-1

A1 SCALE HOR. 1:1000
 VER. 1:250

NOTE:

1. FOR NOTES AND LEGEND REFER TO DRAWING NO. 60335576/C1/C00/1121.

BKREJV

TITLE OF DESIGNATED PROJECT:

Castle Peak Road Diversion

CONTRACT TITLE:

CONTRACT NO.: ND/2019/01
 KWU TUNG NORTH NEW
 DEVELOPMENT AREA, PHASE 1:
 SITE FORMATION AND
 INFRASTRUCTURE WORKS

CLIENT

土木工務發展署
 Civil Engineering and
 Development Department

CONSULTANT

土研顧問公司
 AECOM Asia Company Ltd.
 www.aecom.com

SUB-CONSULTANTS

分列工務顧問公司

ISSUE/REVISION

修改

STATUS

核准

SCALE

比例 1:1000

DIMENSION UNIT

尺寸單位 METRES

KEY PLAN

索引圖

PROJECT NO.

項目編號 60335576

CONTRACT NO.

合約編號 ND/2019/01

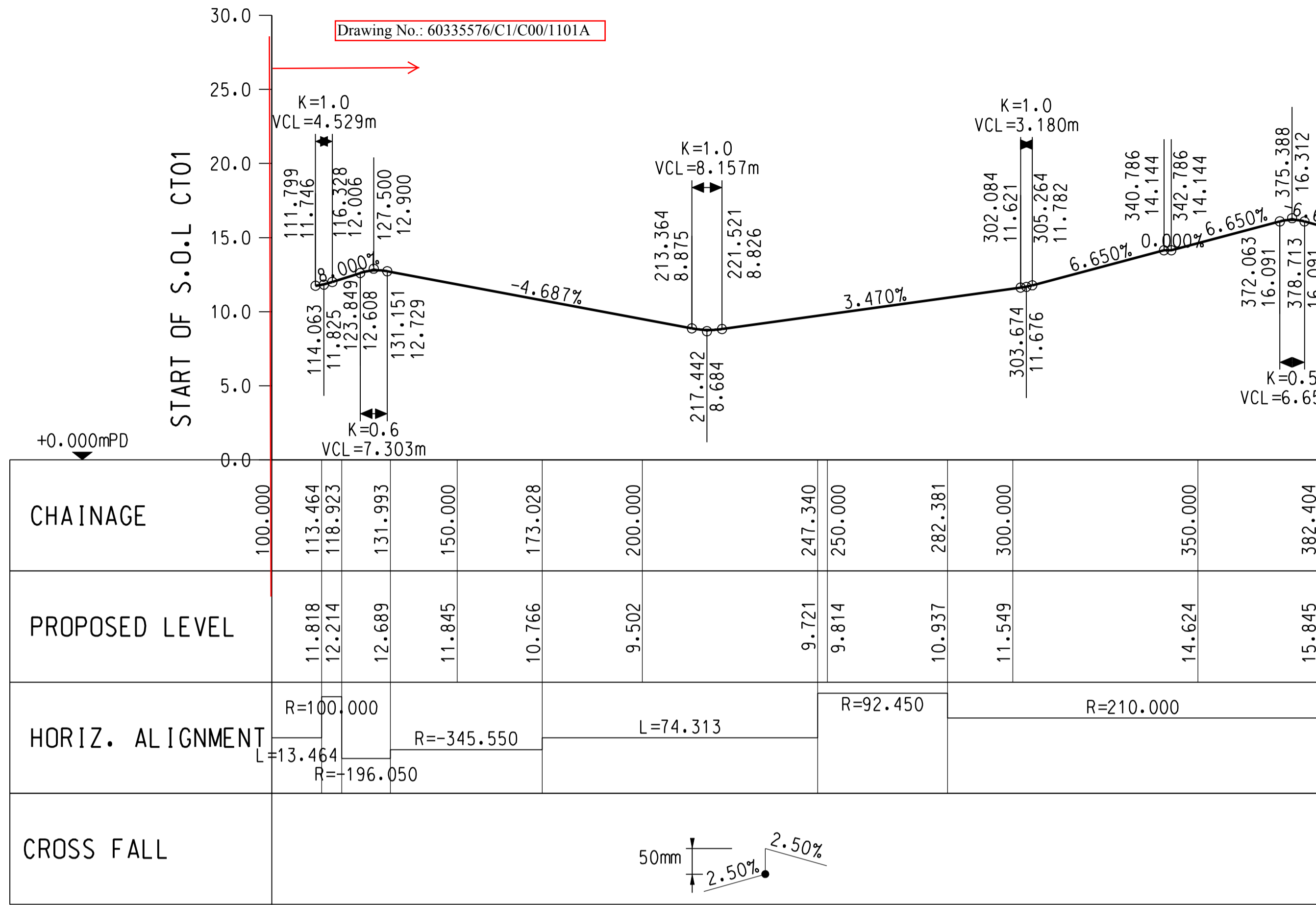
SHEET TITLE

圖紙名稱 ROAD WORKS -
 VERTICAL PROFILE

SHEET NUMBER

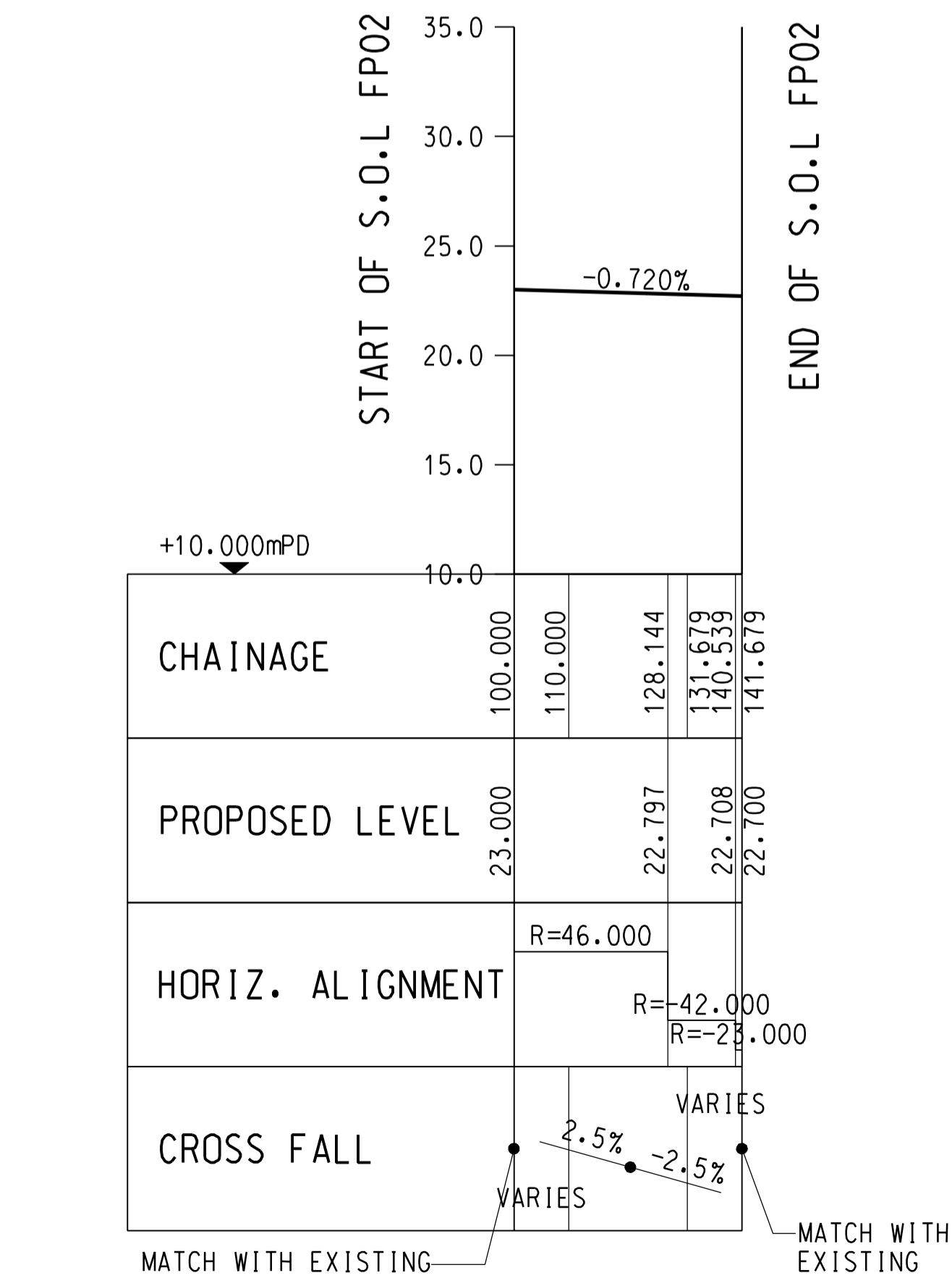
圖紙編號 60335576/C1/C00/1122

This drawing has been prepared for the use of AECOM's client. It may not be used, modified, reproduced or relied upon by third parties, except as agreed by AECOM or as required by law. AECOM accepts no responsibility, and denies any liability whatsoever, to any party that uses or relies on this drawing without AECOM's express written consent. Do not scale this document. All measurements must be obtained from the stated dimensions.



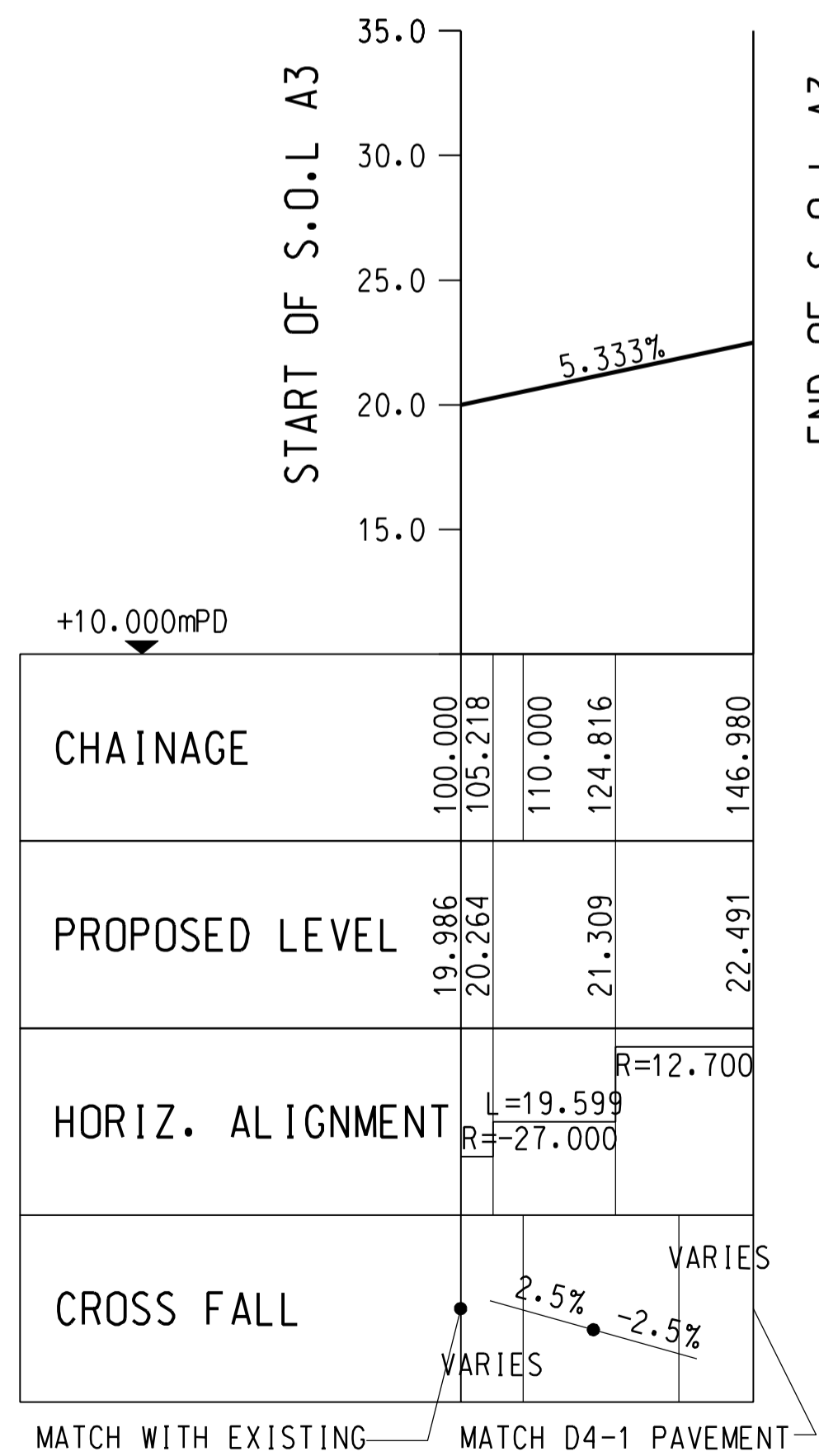
PROFILE ALONG THE SETTING OUT LINE CT01

A1 SCALE HOR. 1:1000
 VER. 1:250



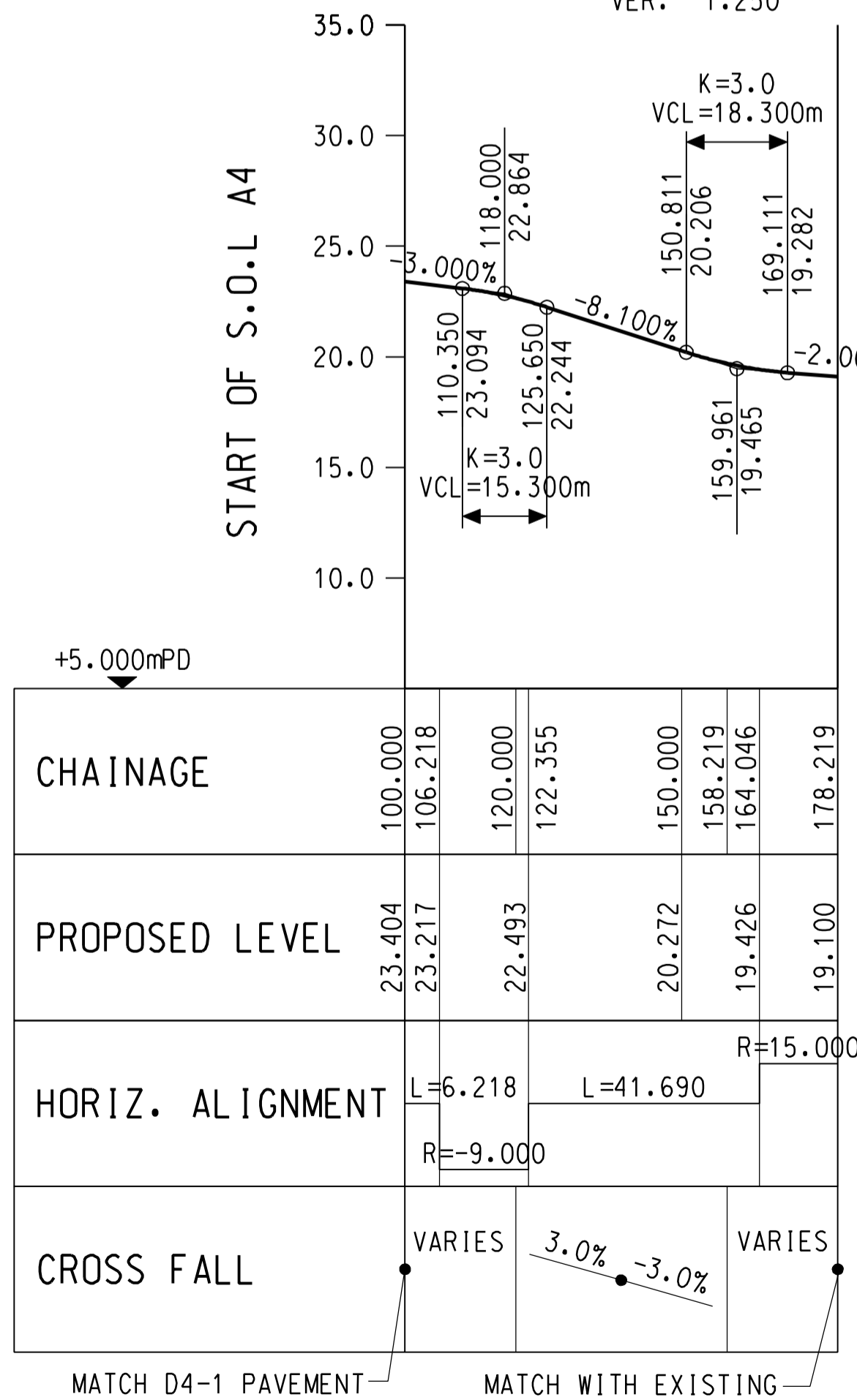
PROFILE ALONG THE SETTING OUT LINE FP02

A1 SCALE HOR. 1:1000
 VER. 1:250



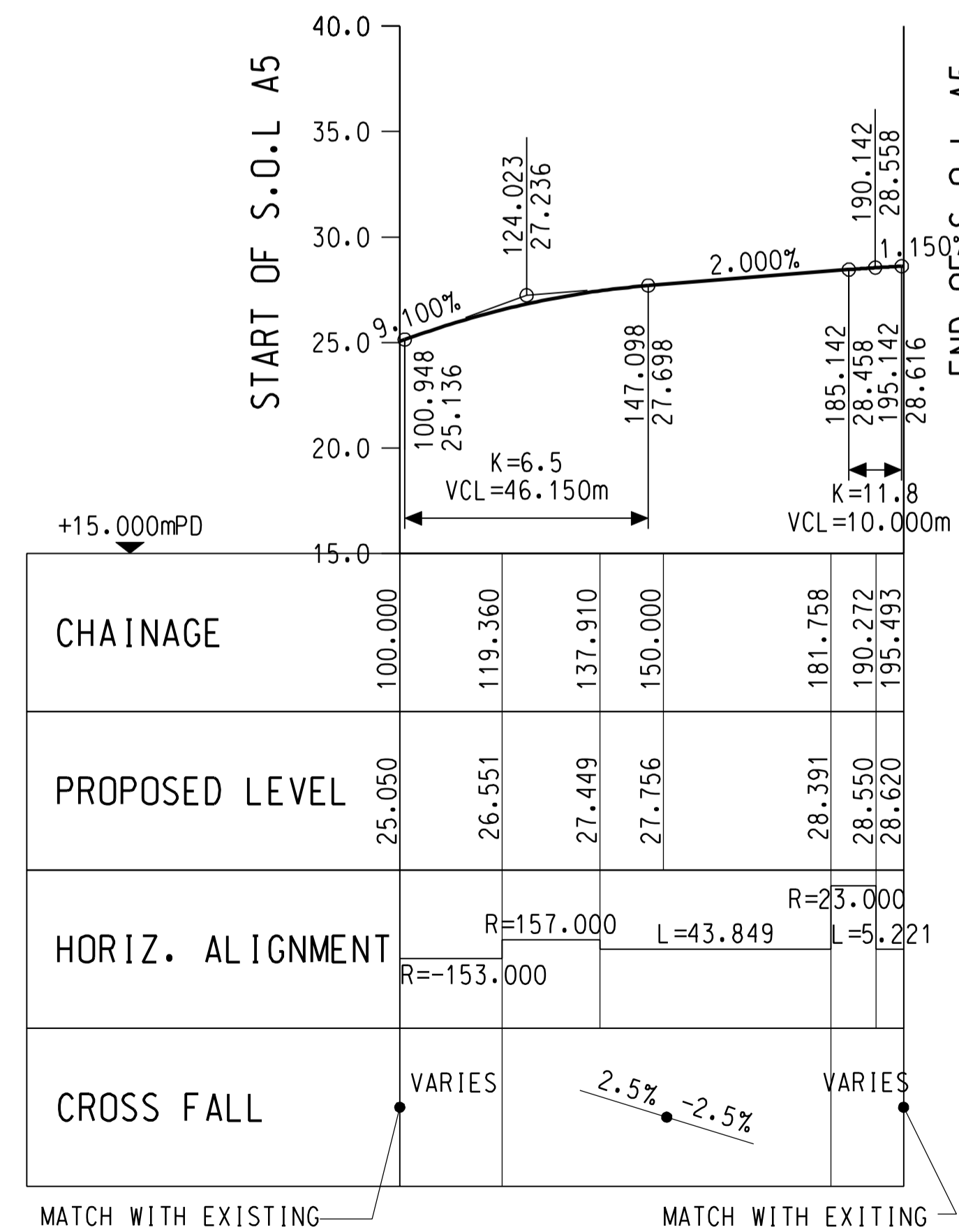
PROFILE ALONG THE SETTING OUT LINE A3

A1 SCALE HOR. 1:1000
 VER. 1:250



PROFILE ALONG THE SETTING OUT LINE A4

A1 SCALE HOR. 1:1000
 VER. 1:250



PROFILE ALONG THE SETTING OUT LINE A5

A1 SCALE HOR. 1:1000
 VER. 1:250

PROFILE ALONG THE SETTING OUT LINE FP01

A1 SCALE HOR. 1:1000
 VER. 1:250

PROFILE ALONG THE SETTING OUT LINE A2

A1 SCALE HOR. 1:1000
 VER. 1:250

PROFILE ALONG THE SETTING OUT LINE A2

A1 SCALE HOR. 1:1000
 VER. 1:250

NOTE:
 1. FOR NOTES AND LEGEND REFER TO DRAWING NO. 60335576/C1/C00/1121.

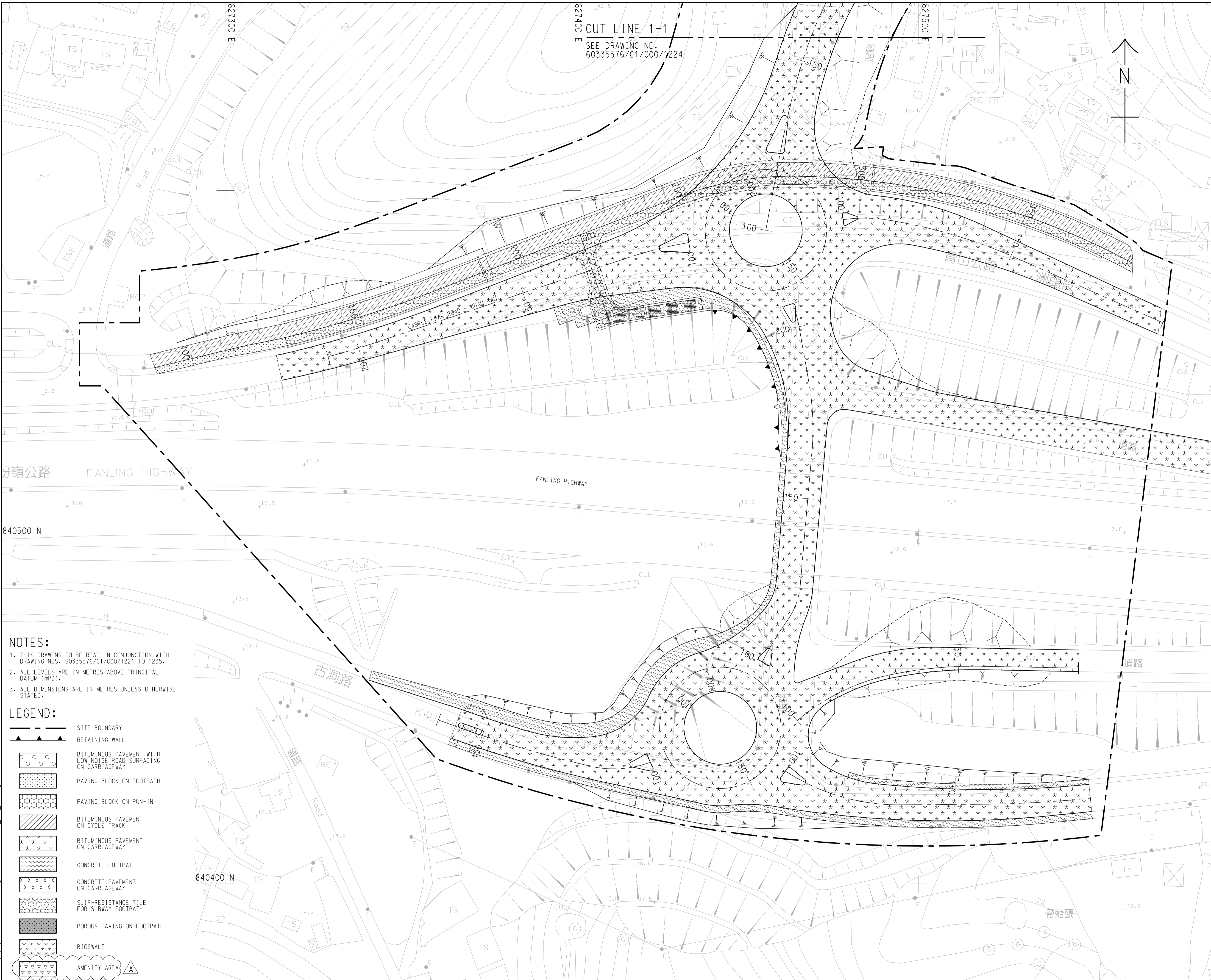
BKREJV
TITLE OF DESIGNATED PROJECT:
 Castle Peak Road Diversion
CONTRACT TITLE:
 CONTRACT NO.: ND/2019/01
 KWU TUNG NORTH NEW
 DEVELOPMENT AREA, PHASE 1:
 SITE FORMATION AND
 INFRASTRUCTURE WORKS

CLIENT
 土木工程拓展署
CEDD
 Civil Engineering and
 Development Department
CONSULTANT
 土研顧問公司
 AECOM Asia Company Ltd.
 www.aecom.com
SUB-CONSULTANTS
 分列工程顧問公司

ISSUE/REVISION
 修訂
STATUS
 擬定
SCALE
 比例
A1 1:1000
KEY PLAN
 索引圖
DIMENSION UNIT
 尺寸單位
METRES

PROJECT NO.
 項目編號
60335576
CONTRACT NO.
 合約編號
ND/2019/01
SHEET TITLE
 圖紙名稱
ROAD WORKS - VERTICAL PROFILE
SHEET NUMBER
 圖紙編號
60335576/C1/C00/1128

This drawing has been prepared for the use of AECOM's client. It may not be used, modified, reproduced or relied upon by third parties, except as agreed by AECOM or as required by law. AECOM accepts no responsibility, and denies any liability whatsoever, to any party that uses or relies on this drawing without AECOM's express written consent. Do not scale this document. All measurements must be obtained from the stated dimensions.



NOTES:

1. THIS DRAWING TO BE READ IN CONJUNCTION WITH DRAWING NOS. 60335576/C1/C00/1221 TO 1235.
2. ALL LEVELS ARE IN METRES ABOVE PRINCIPAL DATUM (mPD).
3. ALL DIMENSIONS ARE IN METRES UNLESS OTHERWISE STATED.

LEGEND:

	SITE BOUNDARY
	RETAINING WALL
	BITUMINOUS PAVEMENT WITH LOW NOISE ROAD SURFACING ON CARRIAGEWAY
	PAVING BLOCK ON FOOTPATH
	PAVING BLOCK ON RUN-IN
	BITUMINOUS PAVEMENT ON CYCLE TRACK
	BITUMINOUS PAVEMENT ON CARRIAGEWAY
	CONCRETE FOOTPATH
	CONCRETE PAVEMENT ON CARRIAGEWAY
	SLIP-RESISTANCE TILE FOR SUBWAY FOOTPATH
	POROUS PAVING ON FOOTPATH
	BIOSWALE
	AMENITY AREA

BKREJV

TITLE OF DESIGNATED PROJECT:
 Castle Peak Road Diversion

CONTRACT TITLE:
 CONTRACT NO.: ND/2019/01
 KWU TUNG NORTH NEW DEVELOPMENT AREA, PHASE 1:
 SITE FORMATION AND INFRASTRUCTURE WORKS

CLIENT:
 土木工務發展署
 Civil Engineering and Development Department

CONSULTANT:
 工程師有限公司
 AECOM Asia Company Ltd.
 www.aecom.com

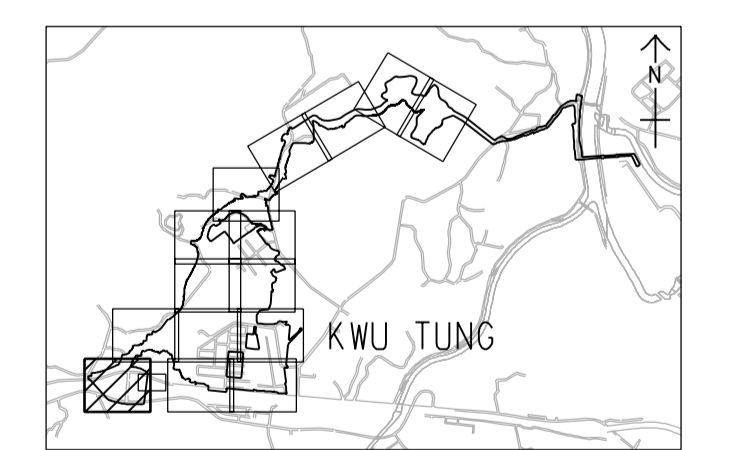
SUB-CONSULTANTS:
 分判工程師有限公司

ISSUE/REVISION:
 修訂

STATUS:
 編製

SCALE: A3 1:1000
DIMENSION UNIT: METRES

KEY PLAN: A1 1:40000



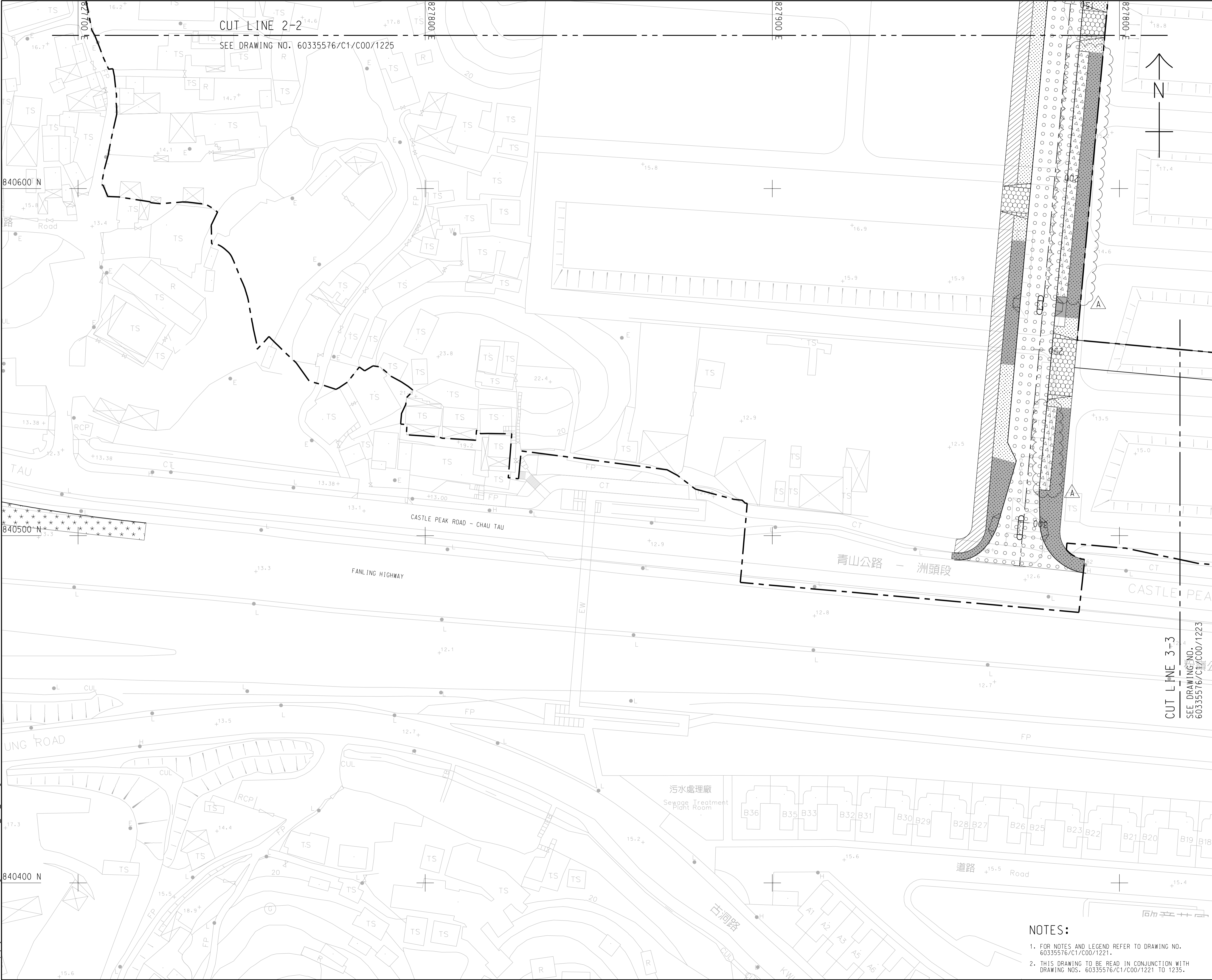
PROJECT NO.: 60335576
CONTRACT NO.: ND/2019/01

SHEET TITLE: PAVEMENT LAYOUT PLAN

SHEET NUMBER: 60335576/C1/C00/1221A
 SHEET 1 OF 15

This drawing has been prepared for the use of AECOM's client. It may not be used, modified, reproduced or relied upon by third parties, except as agreed by AECOM, or as required by law. AECOM accepts no responsibility, and denies any liability whatsoever, to any party that uses or relies on this drawing without AECOM's express written consent. Do not scale this document. All measurements must be obtained from the stated dimensions.

Project Management Initials: Designer: TCKC Checked: YHH Approved: HWL
 ISO A1 594mm x 841mm
 Pld File by: ZENGJLY2 2019/7/17
 PATH: P:\Projects\60335576\Drawing\contract\11000\C1_C00_1222.dgn



BKREJV

TITLE OF DESIGNATED PROJECT:
 Castle Peak Road Diversion

CONTRACT TITLE:
 CONTRACT NO.: ND/2019/01
 KWU TUNG NORTH NEW
 DEVELOPMENT AREA, PHASE 1:
 SITE FORMATION AND
 INFRASTRUCTURE WORKS

CLIENT
 業主
CEDD 土木工程拓展署
 Civil Engineering and
 Development Department

CONSULTANT
 工程顧問公司
 AECOM Asia Company Ltd.
 www.aecom.com

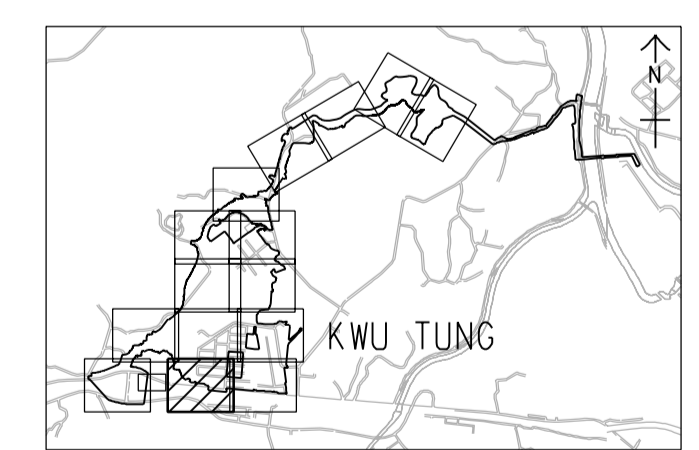
SUB-CONSULTANTS
 分判工程顧問公司

ISSUE/REVISION
 修訂

STATUS
 階段

SCALE **DIMENSION UNIT**
 比例 尺寸單位
A3 1:1000 **METRES**

KEY PLAN A1 1:40000
 索引圖



PROJECT NO. **CONTRACT NO.**
 項目編號 合約編號
 60335576 ND/2019/01

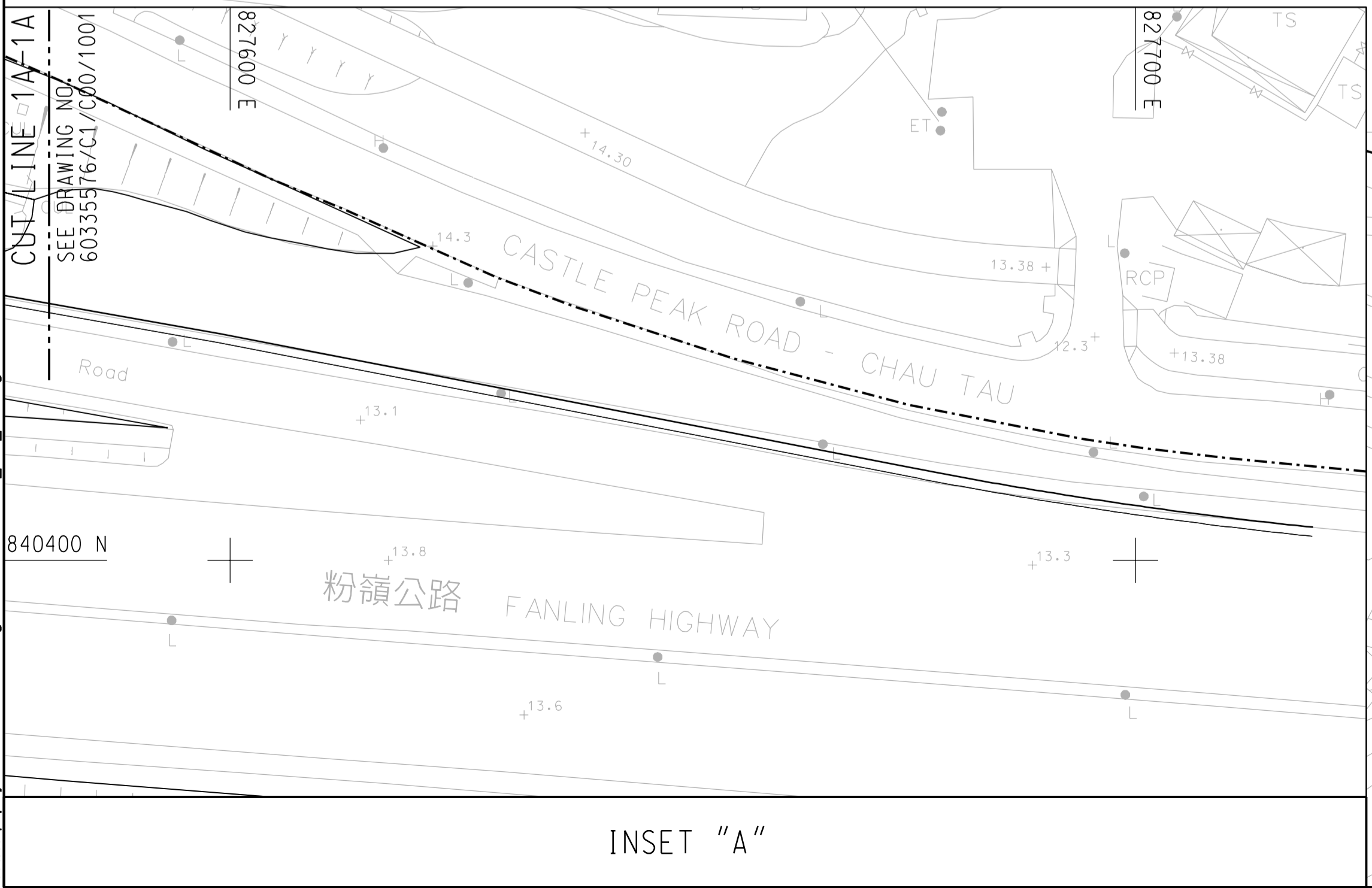
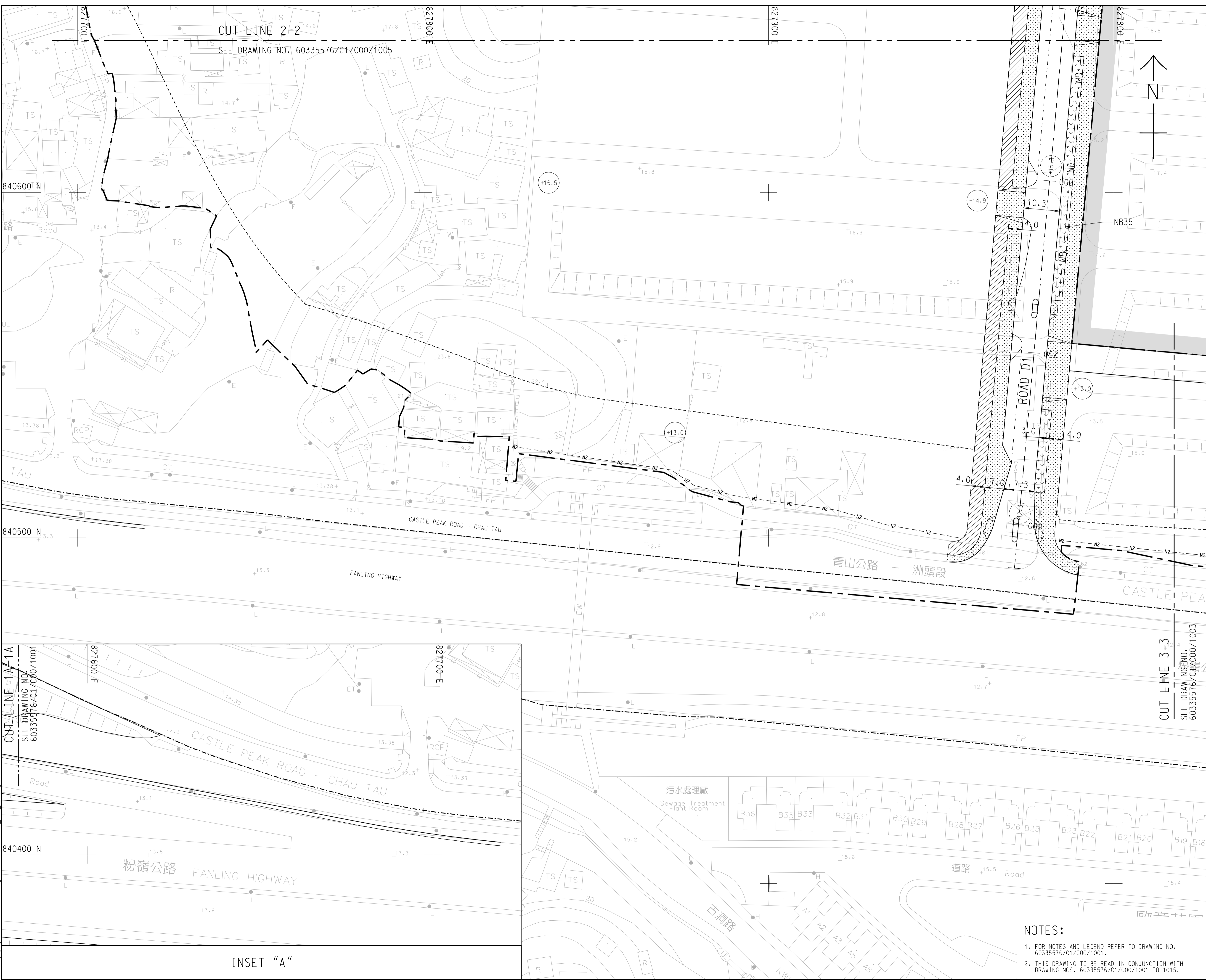
SHEET TITLE
 圖紙名稱
PAVEMENT LAYOUT PLAN

SHEET NUMBER
 圖紙編號
 60335576/C1/C00/1222A

- NOTES:**
- FOR NOTES AND LEGEND REFER TO DRAWING NO. 60335576/C1/C00/1221.
 - THIS DRAWING TO BE READ IN CONJUNCTION WITH DRAWING NOS. 60335576/C1/C00/1221 TO 1235.

This drawing has been prepared for the use of AECOM's client. It may not be used, modified, reproduced or relied upon by third parties, except as agreed by AECOM or as required by law. AECOM accepts no responsibility, and denies any liability whatsoever, to any party that uses or relies on this drawing without AECOM's express written consent. Do not scale this document. All measurements must be obtained from the stated dimensions.

Plot File by: ZENGGLIY2 2019/06/18
 PATH: P:\Projects\60335576\Drawing\contract\11000\C1_C00_1002.dgn
 Project Management Initials: Designer: TCKC Checked: YHH Approved: HWL
 ISO A1 594mm x 841mm



BKREJV

TITLE OF DESIGNATED PROJECT:
Castle Peak Road Diversion

CONTRACT TITLE:
CONTRACT NO.: ND/2019/01
KWU TUNG NORTH NEW DEVELOPMENT AREA, PHASE 1: SITE FORMATION AND INFRASTRUCTURE WORKS

CLIENT
 業主
CEDD 土木工程拓展署
 Civil Engineering and Development Department

CONSULTANT
 工程顧問公司
AECOM Asia Company Ltd.
 www.aecom.com

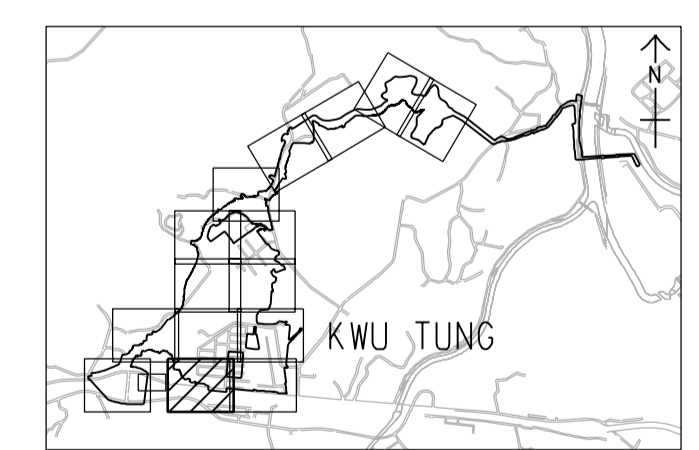
SUB-CONSULTANTS
 分判工程顧問公司

ISSUE/REVISION
 修訂

STATUS
 階段

SCALE 比例
A3 1:1000
KEY PLAN 索引圖 A1 1:40000

DIMENSION UNIT 尺寸單位
METRES



PROJECT NO. 項目編號
60335576

CONTRACT NO. 合約編號
ND/2019/01

SHEET TITLE 圖紙名稱
GENERAL LAYOUT

SHEET NUMBER 圖紙編號
60335576/C1/C00/1002

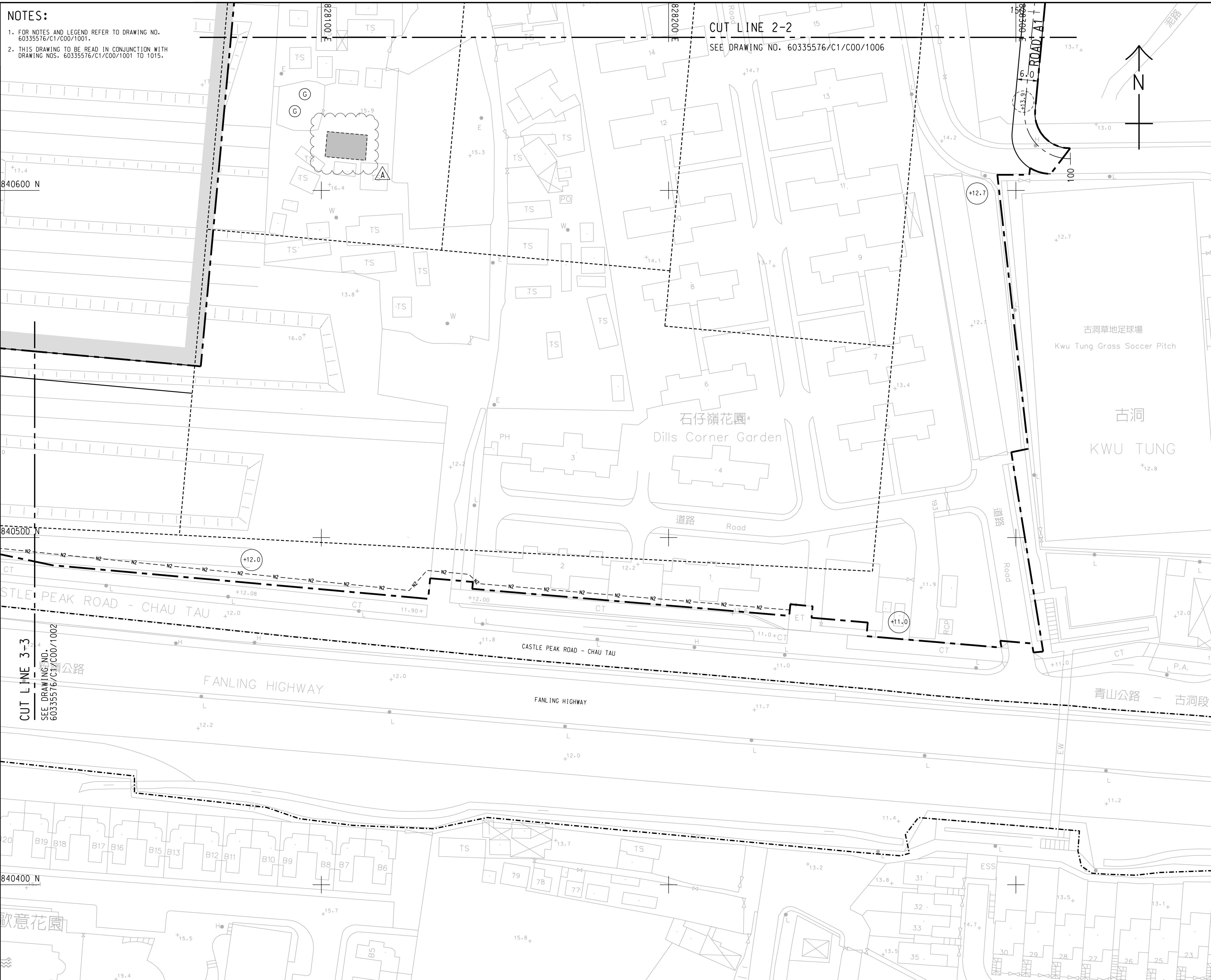
- NOTES:**
- FOR NOTES AND LEGEND REFER TO DRAWING NO. 60335576/C1/C00/1001.
 - THIS DRAWING TO BE READ IN CONJUNCTION WITH DRAWING NOS. 60335576/C1/C00/1001 TO 1015.

This drawing has been prepared for the use of AECOM's client. It may not be used, modified, reproduced or relied upon by third parties, except as agreed by AECOM or as required by law. AECOM accepts no responsibility, and denies any liability whatsoever, to any party that uses or relies on this drawing without AECOM's express written consent. Do not scale this document. All measurements must be obtained from the stated dimensions.

16/07/2019
 Path: P:\Projects\60335576\Drawing\Contract\11000\C1_C00_1003.dgn
 Pld File by: CAOPA
 Project Management Initials: Designer: CKC Checked: YHH Approved: HWL
 ISO A1 594mm x 841mm

NOTES:

- FOR NOTES AND LEGEND REFER TO DRAWING NO. 60335576/C1/C00/1001.
- THIS DRAWING TO BE READ IN CONJUNCTION WITH DRAWING NOS. 60335576/C1/C00/1001 TO 1015.



BKREJV

TITLE OF DESIGNATED PROJECT:
 Castle Peak Road Diversion

CONTRACT TITLE:
 CONTRACT NO.: ND/2019/01
 KWU TUNG NORTH NEW DEVELOPMENT AREA, PHASE 1:
 SITE FORMATION AND INFRASTRUCTURE WORKS

CLIENT
 業主
 土木工程拓展署
 Civil Engineering and Development Department

CONSULTANT
 工程顧問公司
 AECOM Asia Company Ltd.
 www.aecom.com

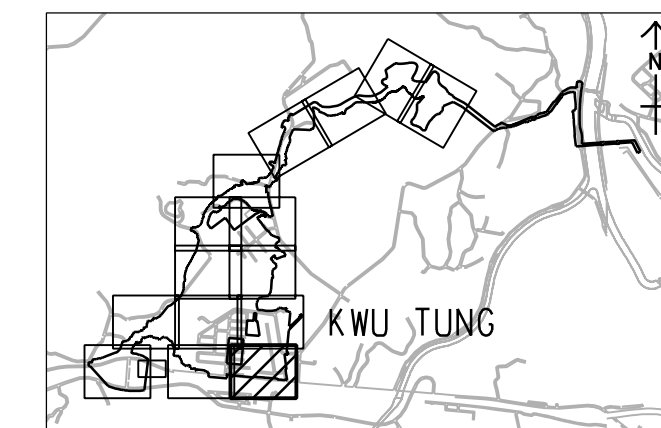
SUB-CONSULTANTS
 分判工程顧問公司

ISSUE/REVISION
 修訂

STATUS
 圖樣

SCALE **DIMENSION UNIT**
 比例 尺寸單位
A3 1:1000 METRES

KEY PLAN A1 1:40000
 索引圖



PROJECT NO. **CONTRACT NO.**
 項目編號 合約編號
 60335576 ND/2019/01

SHEET TITLE
 圖紙名稱
 GENERAL LAYOUT

SHEET NUMBER
 圖紙編號
 60335576/C1/C00/1003A

SHEET 3 OF 15

This drawing has been prepared for the use of AECOM's client. It may not be used, modified, reproduced or relied upon by third parties, except as agreed by AECOM or as required by law. AECOM accepts no responsibility, and denies any liability whatsoever, to any party that uses or relies on this drawing without AECOM's express written consent. Do not scale this document. All measurements must be obtained from the stated dimensions.